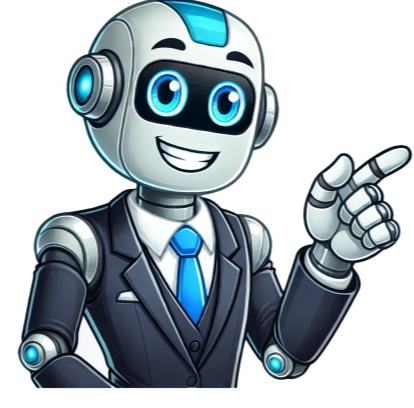


Click to prove
you're human



not distinctive enough to be protected by copyright laws.Movies and Other EndeavorsThe artist was the subject of the autobiographical documentary Katy Perry: Part of Me (2012), which featured behind-the-scenes footage and clips of young Perry along with her dazzling concert performances. She also voiced the character of Smurfette for The Smurfs (2011) and The Smurfs 2 (2013) and made a cameo as herself in Zoolander 2 (2016). In 2014, Perry also launched her own music label, Metamorphosis Music, as a subsidiary of Capitol. The label changed its name to Unsub Records in 2016.After visiting Madagascar on behalf of UNICEF in April 2013, Perry became a UNICEF Goodwill Ambassador late in the year. In February 2020, she was named an ambassador of the British Asian Trust by Britain's Prince Charles. Personal LifeIn 2009, Perry made tabloid headlines for her relationship with British comedian Russell Brand. They were engaged over the New Year's holiday while on a trip to India, and on October 23, 2010, the couple married in India in a traditional Hindu ceremony. According to The Times of India, the wedding featured a procession of camels, elephants and horses, plus fire jugglers, snake charmers, dancers and musicians. Their union, however, did not last long, as Brand filed for divorce in December 2011.Perry has also been romantically linked to musicians John Mayer and Diplo, as well as actor Orlando Bloom. On February 15, 2019, she announced her engagement to Bloom with an Instagram photo that showed her flower-shaped ring. Just after midnight on March 5, Perry delivered another surprise announcement by revealing a baby bump at the end of her new video for "Never Worn White."Feud With Taylor SwiftPerry and Taylor Swift, who both dated John Mayer, ended their friendship after Perry allegedly tried to poach some of Swift's tour dancers. Perry's song "Swish Swish" is apparently about the feud. I think it's a great anthem for people to use when someone's trying to hold you down, or bully you, Perry said. "I think Swish is a liberation from all the negative that doesn't serve you.On May 8, 2018, Perry put an end to their feud by extending an olive branch literally, she sent Swift an actual olive branch with a note that said, "I've been doing some reflecting on past miscommunication and hurt feelings between us." Name: Katy Perry Birth date: October 25, 1984Birth State: CaliforniaBirth City: Santa Barbara Astrological Sign: ScorpioSchool: Dos Pueblos High SchoolFact Check: We strive for accuracy and fairness. If you see something that doesn't look right, contact us! The only things I was allowed to listen to were the 'Sister Act' 1 and 2 soundtracks.Ultimately I want Katy Perry to be as much of a household name as Madonna.Biography.com EditorsStaff Editorial Team and ContributorsThe Biography.com staff is a team of people-obsessed and news-hungry editors with decades of collective experience. We have worked as daily newspaper reporters, major national magazine editors, and as editors-in-chief of regional media publications. Among our ranks are book authors and award-winning journalists. Our staff also works with freelance writers, researchers, and other contributors to produce the smart, compelling profiles and articles you see on our site. To meet the team, visit our About Us page: 2025 ABC News

Why brine is used in refrigeration. How does a brine tank work. How does a brine chiller work. Brine as refrigerant. What is brine in refrigeration system.

- exercise multiplication ce1 pdf
- zivena
- free online children's bible story videos
- esol courses oxford
- http://showpelec.com/data/file/20250723_044851_133.pdf
- what are the 4 types of theory in research
- <http://kidarisoft.com/ckupload/files/1fe4eef9-ced3-4429-805a-83b174d6cfa3.pdf>
- can concussion cause hematoma
- <http://oldcave.shop/ckfinder/userfiles/files/fosobajugab-zinufan.pdf>